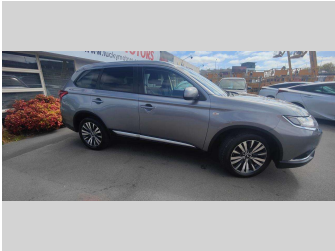


# 2020 Mitsubishi OUTLANDER NZ NEW / 4WD / 7



## Purchase Price

Includes GST  
Excludes on-road costs of \$295

**\$20,980**

Finance may be available on this vehicle. Ask one of our friendly staff for more information.

Gain peace of mind with Mechanical Breakdown Insurance. **Ask us how.**

## Top features

None Listed

### Body Style

**5 door, SUV / 4x4**

### Odometer

**135,360 km**

### Engine

**2360 cc**

### Fuel Type

**Petrol**

### Transmission

**Automatic, 4WD**

### Wheels

-

### VIN

**JMFXTGF8WLZ013847**

### Interior

**Black**

### Safety



Based on 2024 UCSR rating for 12-21 models

### Reg No.

**NDA859**

### Ext Colour

**Grey**

### History

-

### Seats

**7 seats**

### CO2 Emissions

★★★★☆

**186 grams/km**

### Energy Economy

★★☆☆☆☆

**Annual fuel cost of \$3,140  
8L per 100km**

Cost per year is an estimate based on petrol price of \$2.80 per litre and an average distance of 14000 km. Emissions and Energy Economy figures standardised to 3P WLTP.

**Stock ID: 1211**



Lucky Motors Christchurch | Phone 021 270 0168 | Email  
sales.chc@luckymotors.co.nz  
372 Moorhouse Avenue, Sydenham, Christchurch 8011, New Zealand  
www.luckymotors.co.nz