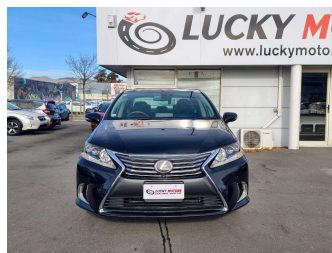


# 2014 Lexus HS250H VERSION L



**Purchase Price**

**\$16,480**

Includes GST  
Excludes on-road costs of \$595

Finance may be available on this vehicle. Ask one of our friendly staff for more information.

Gain peace of mind with Mechanical Breakdown Insurance. **Ask us how.**

**Top features**

- » ABS Braking
- » Cruise Control

Body Style  
**Sedan**

Odometer  
**99,000 km**

Engine  
**2400 cc, Hybrid**

Fuel Type  
**Hybrid Petrol**


Transmission  
**Automatic**

Wheels  
-

VIN  
**7AT0B01CX26062792**

Interior  
**Black, Leather**

Safety



Based on 2025 VSRR rating

Reg No.  
-

Ext Colour  
**Black**

History  
-

Seats  
**5 seats, Leather**

CO2 Emissions  
**★★★★☆**  
**134 grams/km**

Energy Economy  
**★★★★☆☆**  
**Annual fuel cost of \$2,270**  
**5.8L per 100km**

Cost per year is an estimate based on petrol price of \$2.80 per litre and an average distance of 14000 km. Emissions and Energy Economy figures standardised to 3P WLTP.

**Stock ID: 1748**



Lucky Motors Christchurch | Phone 021 270 0168 | Email sales.chc@luckymotors.co.nz  
372 Moorhouse Avenue, Sydenham, Christchurch 8011, New Zealand  
www.luckymotors.co.nz