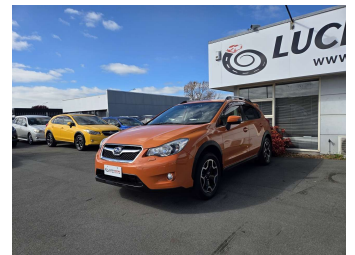
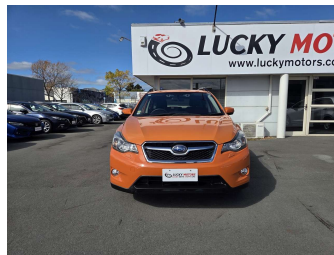


2015 Subaru XV 2.0I-L EYESIGHT4WD



Purchase Price

\$11,980

Includes GST
Excludes on-road costs of \$595

Finance may be available on this vehicle. Ask one of our friendly staff for more information.

Gain peace of mind with Mechanical Breakdown Insurance. **Ask us how.**

- Top features**
- » ABS Braking
 - » Car Alarm
 - » Cruise Control
 - » Electric Mirrors
 - » Fog Lights

Body Style
5 door, SUV / 4x4

Odometer
147,000 km

Engine
2000 cc

Fuel Type
Petrol

Transmission
Automatic, 4WD

Wheels
-

VIN
7AT0GF1XX26094777

Interior
Black

Safety



Based on 2025 UCSR rating for 12-16 models

Reg No.

-

Ext Colour
Orange

History

-

Seats
5 seats

CO2 Emissions
★★★★☆
163 grams/km

Energy Economy
★★★☆☆

Annual fuel cost of \$2,740
7L per 100km

Cost per year is an estimate based on petrol price of \$2.80 per litre and an average distance of 14000 km. Emissions and Energy Economy figures standardised to 3P WLTP.

Stock ID: 1608



Lucky Motors Christchurch | Phone 021 270 0168 | Email sales.chc@luckymotors.co.nz
372 Moorhouse Avenue, Sydenham, Christchurch 8011, New Zealand
www.luckymotors.co.nz