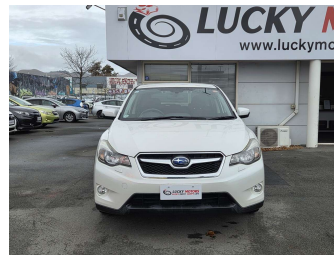


2015 Subaru XV 4WD 2.0I-L EYESIGHT



Purchase Price

\$13,980

Includes GST
Excludes on-road costs of \$595

Finance may be available on this vehicle. Ask one of our friendly staff for more information.

Gain peace of mind with Mechanical Breakdown Insurance. **Ask us how.**

Top features

- » ABS Braking
- » Air Conditioning
- » CD Player
- » Central Locking
- » Climate Control
- » Cruise Control
- » Reversing Camera

Body Style

5 door, SUV / 4x4

Odometer

111,000 km

Engine

2000 cc

Fuel Type

Petrol

Transmission

Automatic, 4WD

Wheels

-

VIN

7AT0GF1XX26088884

Interior

Black, Cloth

Safety



Based on 2025 UCSR rating for 12-16 models

Reg No.

-

Ext Colour

PEARL

History

-

Seats

5 seats, Cloth

CO2 Emissions

★★★★☆

163 grams/km

Energy Economy

★★★☆☆

Annual fuel cost of \$2,740

7L per 100km

Cost per year is an estimate based on petrol price of \$2.80 per litre and an average distance of 14000 km. Emissions and Energy Economy figures standardised to 3P WLTP.

Stock ID: 1669



Lucky Motors Christchurch | Phone 021 270 0168 | Email sales.chc@luckymotors.co.nz
372 Moorhouse Avenue, Sydenham, Christchurch 8011, New Zealand
www.luckymotors.co.nz