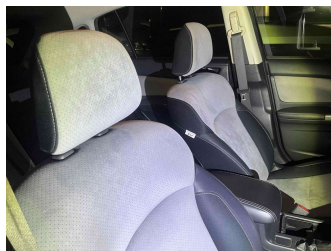
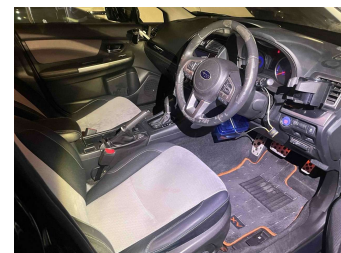
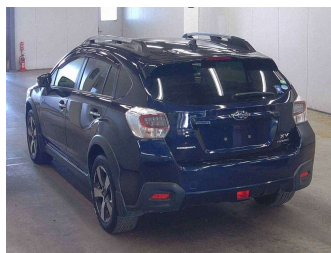


2016 Subaru Impreza XV HYBRID 4WD 2.0I-L



Purchase Price **\$14,480**
Includes GST
 Excludes on-road costs of \$595

Finance may be available on this vehicle. Ask one of our friendly staff for more information.

Gain peace of mind with Mechanical Breakdown Insurance. **Ask us how.**

Top features
 None Listed

Body Style
SUV / 4x4

Odometer
126,000 km

Engine
2000 cc

Fuel Type
 -

Transmission
Paddle Shift

Wheels
 -

VIN
7AT0GF1XX26033574

Interior
 -

Safety



Based on 2025 UCSR rating for 12-16 models

Reg No.

-

Ext Colour
DARKBLUE

History

-

Seats

-

CO2 Emissions
★★★★☆
135 grams/km

Energy Economy
★★★★☆☆

Annual fuel cost of \$2,270
5.8L per 100km

Cost per year is an estimate based on petrol price of \$2.80 per litre and an average distance of 14000 km. Emissions and Energy Economy figures standardised to 3P WLTP.

Stock ID: 1619



Lucky Motors Christchurch | Phone 021 270 0168 | Email sales.chc@luckymotors.co.nz
 372 Moorhouse Avenue, Sydenham, Christchurch 8011, New Zealand
 www.luckymotors.co.nz